



MAKING HEALTH MATTER

Occupational Health Nurse Advisor



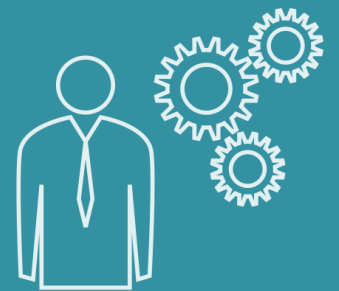
OUR MISSION:

To optimise the health and wellbeing of the working population



OUR VISION:

That healthy employees results in healthy businesses that create sustainable value for a healthy community.



OUR VALUES:

Care

Expertise

Collaboration

Impact



WHO WE ARE:

The Islands only dedicated occupational health service.

Our team have the know-how to advise clients to make sure that work does no harm and support employees to work well.

MOTIVATION

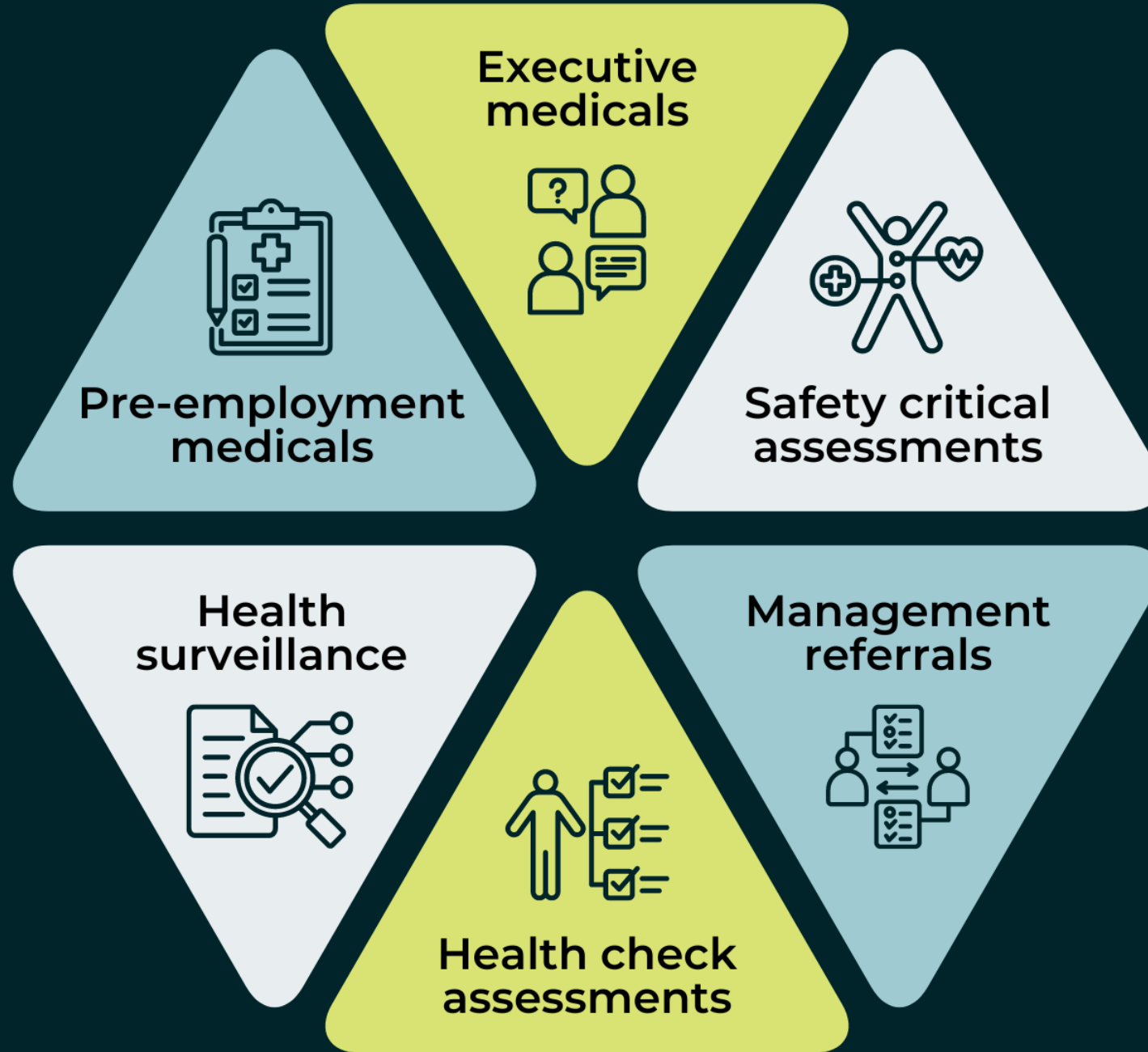
EXPERIENCE

PROFESSIONALISM

KNOWLEDGE



WHAT WE DO



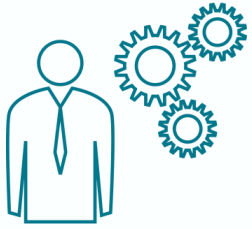


Who we are looking for

We are looking for an exceptional, dynamic & innovative Occupational Health Nurse to contribute to an effective occupational health service to meet the needs of our clients. You will need to be an experienced clinical nurse who possesses good people management, interpersonal and communication skills, excellent observational skills, ability to work independently and prioritise your own caseload, and be service orientated and have a client focused approach to work.

You should be trained to undertake all core occupational health clinical skills. You will need to have experience in managing complex OH casework, have extensive experience in pre-employment medicals, health surveillance, management referrals, along with previous experience in immunisations and phlebotomy.

You will need to be a registered nurse with the NMC, have evidence of ongoing personal and professional development and NMC revalidation along with a specialist post-registration qualification in Occupational Health



What you will be doing

The specifics of your role will depend on what comes in during the day, but the efficient running of a medical office will be at the forefront of your mind. We have clients across a wide variety of sectors and so your role will encompass:

- The delivery of all of our occupational health services to clients ensuring the provision of the occupational health advice is of the highest standard at all times;
- Taking on a clinical lead role as required;
- Undertake clinical supervision/peer and team audit in relation to service delivery as identified;
- Undertaking investigation and response to queries and complaints arising from team activities;
- Attend tender, client review and implementation meetings as required;
- Undertake regular scheduled clinical audit as required;
- Take accountability for identifying, and boldly influencing and implementing improvements to the service provided from a clinical perspective, looking for opportunities to extend the Occupational Health products being offering.



What we can offer

We live and work in Jersey, the largest of the Channel Islands, covering an area of 45 square miles and with a resident population of nearly 110,000. The nearest points of the French coast are Normandy, 14 miles to the East, and Brittany, 20 miles to the South.

We have a great work life balance, only working Monday to Friday and normally in the sun! There is a bustling restaurant pub and bar culture on the Island offering everything from traditional pub food serving local ale and cider to busy Michelin star eateries and town bars specialising in fresh food and cocktails. Given nothing is far, you could be on the beach or in a bar within 10 minutes of finishing work!

We offer a competitive salary (and a low tax rate) and given we are in early start up mode, our benefit package is growing as we do. We are all committed to building a best-in-class occupational health service provision in the Channel Islands and you could join us in our vision.



How to apply

Send your CV, along with a covering letter outlining why you think you would be our perfect fit to Kelly@workhealth.je

If you want to have an informal chat before applying, give us a call on 01534 668 668 and ask to speak to Chris or Kelly.

Interviews will be held remotely, and we can help and guide you to meet the regulations to live and work in our beautiful island.

Need more inspiration?

