



OCCUPATIONAL MEDICINE AND COVID-19

A BRAVE NEW WORLD:
CONTRIBUTION TO THE PANDEMIC RESPONSE

DR CATHERINE KELAHER
SENIOR MEDICAL ADVISOR
JOINT HEALTH COMMAND
DEFENCE



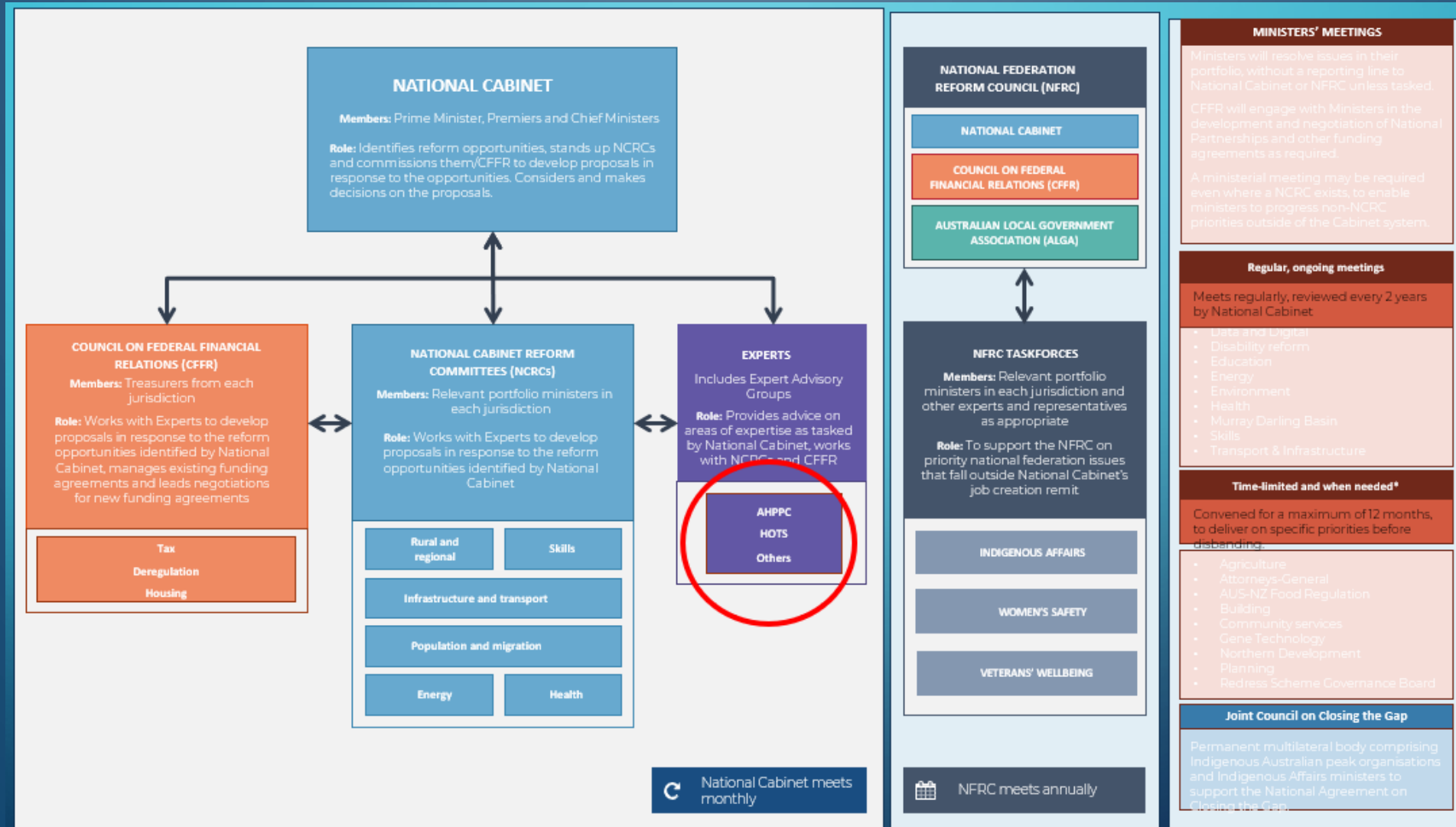


THE OFFICE OF HEALTH PROTECTION

A directorate of the Commonwealth Department of Health, with five sections

- Public information
- Environmental health and health protection policy
- Public Health
- National medical stockpile taskforce
- National Incident and Health Emergency management

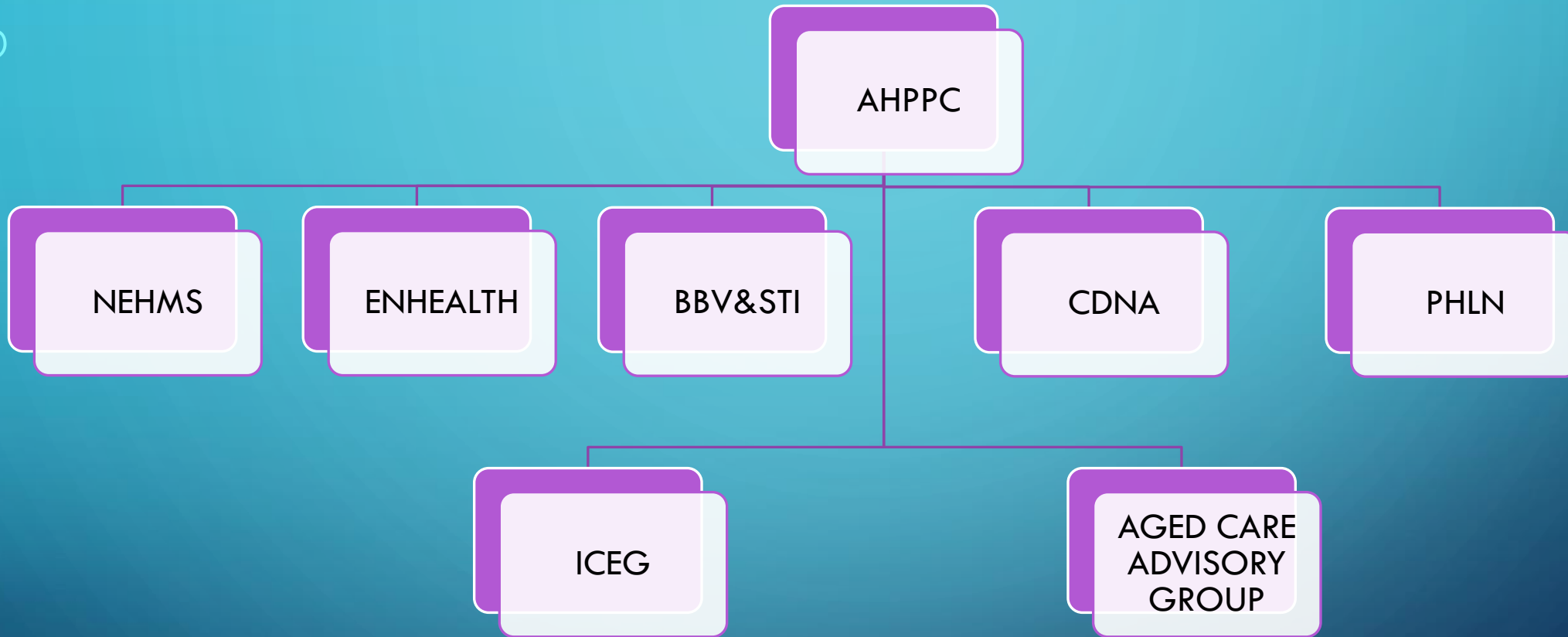
AUSTRALIAN HEALTH PROTECTION PRINCIPAL COMMITTEE



Operates under Cabinet operating principles

Expert Advisory Groups are only subject to Cabinet operating principles in respect of material that goes to National Cabinet

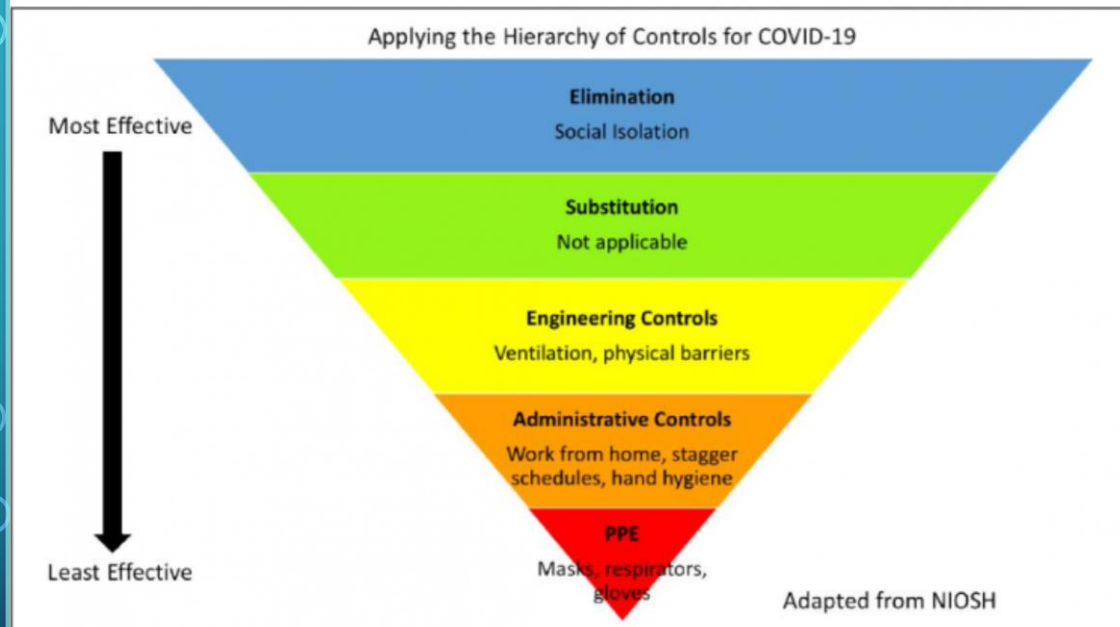
Operates outside of Cabinet operating principles





SYSTEMATIC RISK ASSESSMENT AND MANAGEMENT

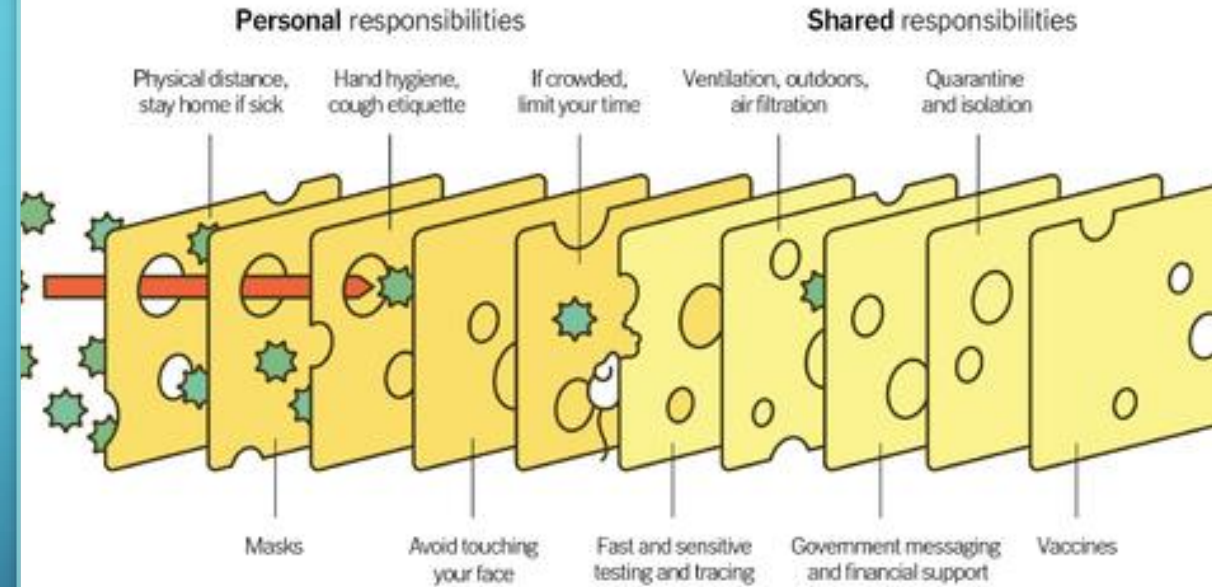
Figure 1. Applying the hierarchy of controls for COVID-19.



Adapted from the [CDC website](#).

Multiple Layers Improve Success

The Swiss Cheese Respiratory Pandemic Defense recognizes that no single intervention is perfect at preventing the spread of the coronavirus. Each intervention (layer) has holes.



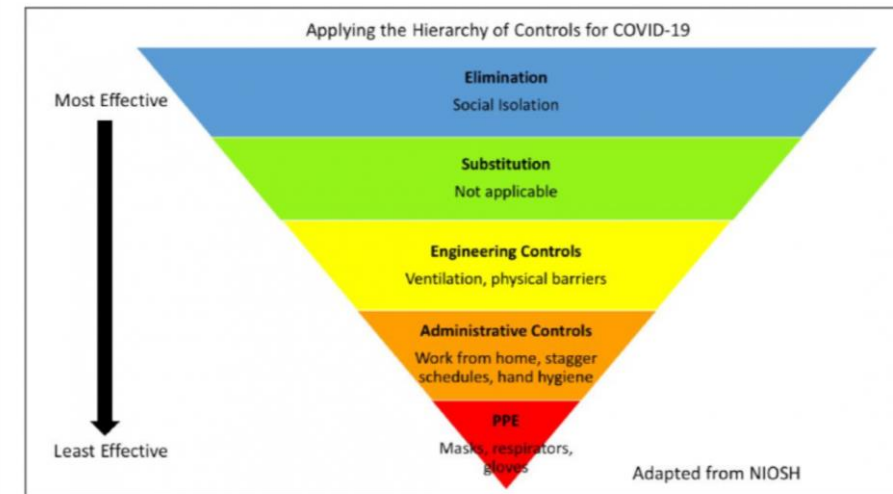
Adapted from Ian M. Mackay ([virologydownunder.com](#)) and James T. Reason. Illustration by Rose Wong



INITIAL ADVICE FOR SUPERMARKETS APRIL 2020

- Density limits
- Queue management
- One-way aisles
- Social distancing

Figure 1. Applying the hierarchy of controls for COVID-19.



Adapted from the [CDC website](#).

ADVICE FOR SUPERMARKETS APRIL 2020: OCCUPATIONAL MEDICINE INPUT

Elimination/Substitution controls:

Enhance their online shopping services including online delivery and pick up

Engineering controls

Use plexiglass barriers to protect staff at checkouts and review ventilation

Administrative controls

- One-way aisles
- Staggered entry to shop
- Limited total numbers entry

ADVICE FOR SUPERMARKETS APRIL 2020: OCCUPATIONAL MEDICINE INPUT

Administrative controls

- Online ticket for entry
- Shopping sessions
- Customers to shop alone not in groups
- Paint lines on the ground to space people waiting at checkouts
- Signage/announcement to remind people to distance
- Staff training in respiratory and hand hygiene requirements
- Provision of hand washing supplies
- Facilitate staff breaks to allow hygiene

ADVICE FOR SUPERMARKETS APRIL 2020: OCCUPATIONAL MEDICINE INPUT

Administrative controls

- Enhanced cleaning of surfaces/trolleys/baskets
- Risk communication to staff and customers

Personal Protective Equipment

- based on risk assessment and availability

Latest News

Woolworths Group appoints Chief Medical Officer as a further measure to help keep team and customers safe during COVID-19

Friday, 14 August 2020: Reaffirming the company's commitment to health and safety during COVID-19, Woolworths Group has appointed Dr Rob McCartney to the newly created position of Chief Medical Officer.

Australian Health Protection Principal Committee (AHPPC) Advice to National Cabinet on 30 March 2020

The Australian Health Protection Principal Committee recommended special provisions be applied to vulnerable people in the workplace.

Date published: 31 March 2020

AHPPC recommends that where vulnerable workers undertake essential work, a risk assessment must be undertaken.

Risk needs to be assessed and mitigated with consideration of the characteristics of the worker, the workplace and the work.

AHPPC Recommendations

AHPPC reviewed the issue and advises that management of health risk to crew, passengers and the Australian community must be based on a systematic risk assessment and application of strict mitigations using the hierarchy of controls. This will require the application of multiple controls providing ‘defence in depth.’

These measures include controls at every level noting that higher level controls are preferred.

Date published: 10 April 2020

Type: News

Intended audience: General public



Recommendations to the National Cabinet around management of health risk for Australian crew on international flights

Australian Health Protection Principal Committee (AHPPC) statement on recommendations for managing of health risk as COVID-19 measures lift

A statement from the Australian Health Protection Principal Committee (AHPPC) about how to manage health risks as COVID-19 measures lift.

Date published: 6 July 2020

Type: News

Intended audience: General public

COVID-19 ACTION PLAN

16 October 2020

Your doctor has assessed you as being of high or moderate risk of severe illness if you contract COVID-19. This Action Plan is designed to help you manage your risk related to COVID-19.

Name: Date:

NO COVID-19 CASES IN YOUR COMMUNITY

ACTIONS

1. Maintain physical distancing 1.5m
2. Maintain good hand and respiratory hygiene
3. Download the COVIDSAFE app
4. Stay at home if you have cold or flu-like symptoms
5. Stay up to date

LOW NUMBERS OF COVID-19 CASES IN YOUR COMMUNITY *(complete your actions)*

ACTIONS

- All of the above **plus**
- 1.
 - 2.
 - 3.
 - 4.
 - 5.
 - 6.

INCREASING COVID-19 CASES IN YOUR COMMUNITY *(complete your actions)*

ACTIONS

- All of the above **plus**
1. Avoid going out except for essential activities
 - 2.
 - 3.
 - 4.
 - 5.



Australian Government

BE COVIDSAFE

Guide for general practitioners to inform shared decision making with patients around risk of severe illness related to COVID-19

This document is intended as a guide for general practitioners to inform discussions with patients around individual risk related to COVID-19 as restrictions are eased.

When a patient presents with concerns about their risk of severe COVID-19 illness you can help them develop a COVID-19 action plan that considers their wishes and priorities and helps them manage risk and maintain a lifestyle that has quality and meaning. This process could include the following:

1. Considering the factors that may affect their risk of severe COVID-19 illness.
2. Helping the person define their risk.
3. Helping the person understanding how personal risk is impacted by:
 - a. the epidemiological context;
 - b. their activities and interactions; and
 - c. personal actions (physical distancing and hygiene measures).
4. Helping the person develop their own risk management strategy.

Severe COVID-19 illness

COVID-19 is caused by the novel beta-coronavirus, severe acute respiratory syndrome coronavirus 2 (SARS-CoV-2). [1] The majority of people infected develop a mild illness while a minority develop severe illness. Higher disease severity, as indicated by hospitalisation, admission to ICU, and death, has been associated with increased age and comorbidities. [2]

In Australia, 13% of the total cases of COVID-19 notified were admitted to hospital. These figures are lower than for many other countries, with 16% of Canadian cases and 36% of cases in the EU/EEA hospitalised. [4] Case fatality rates (CFR) also varied. In the UK and Italy the CFR is around 14%, while the US and the global

Parliament house closing and re-opening

War memorial/National art Gallery/ Questacon/National Science Museum closing and re-opening

Eden Monaro By-Election

Ministerial travel for Parliamentary sittings

Sex industry COVIDSAFE plans

Arts and Culture (Australian Film TV Radio School (AFTRS)

NRL/AFL/ Large Stadiums/theatre COVIDSAFE plans and staged re-opening

Shopping centres COVIDSAFE plans

Supermarkets COVIDSAFE plans

Boarding schools/Universities/childcare centres COVIDSAFE plans

AIS sports plan

Antarctic division COVIDSAFE plans

Supermarket distribution centres COVIDSAFE plans

Abattoirs and meat processing COVIDSAFE plans

Return to business guide for NCCC

WHAT NEXT?



RISK BASED APPROACH TO PROTECTING HEALTH CARE AND HEALTH CARE WORKERS



CHARTER

Health worker safety: a priority for patient safety

This Charter is dedicated to the millions of health workers¹ fighting COVID-19 across the globe who put themselves and their families at risk to treat patients, deliver essential health services and contain the spread of the disease; to the health workers who have become infected with COVID-19; and to those who have lost their lives in their unstinting efforts to combat the disease.



PROFITABLE
HEROES